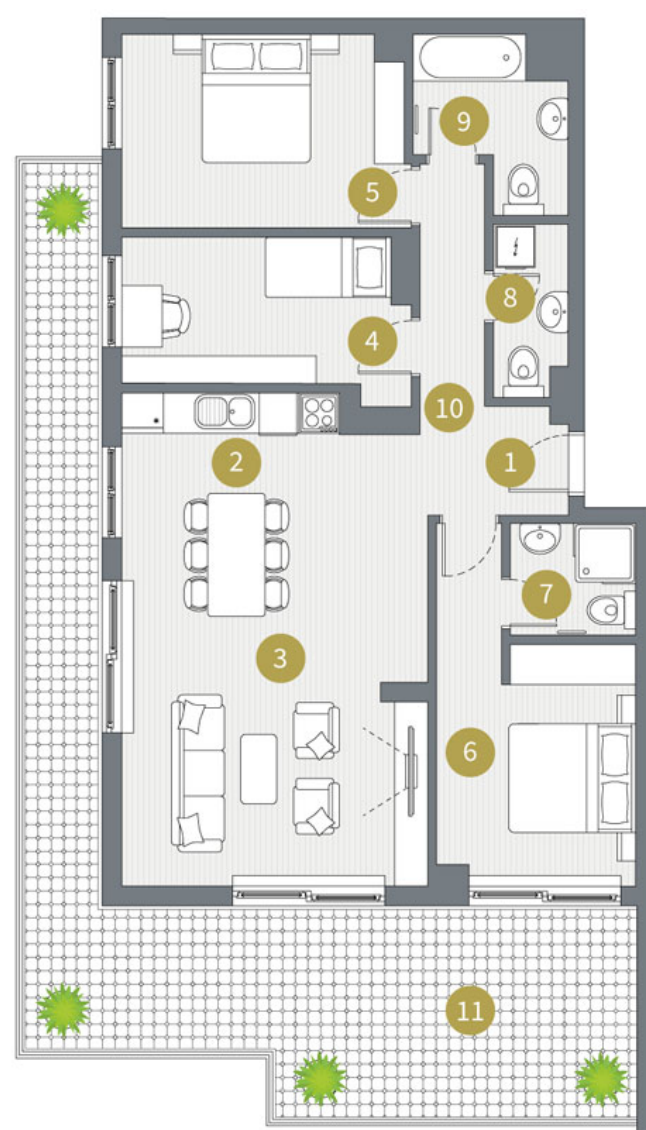


# Četvorosoban tip 4

Površina od 117 do 121.91m<sup>2</sup>

Osnova stana

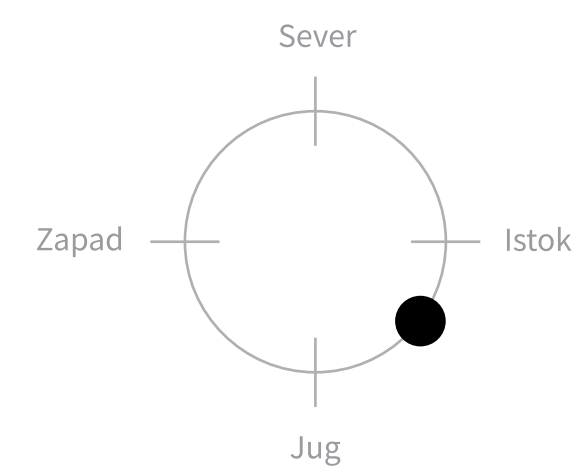


Namena Prostorije

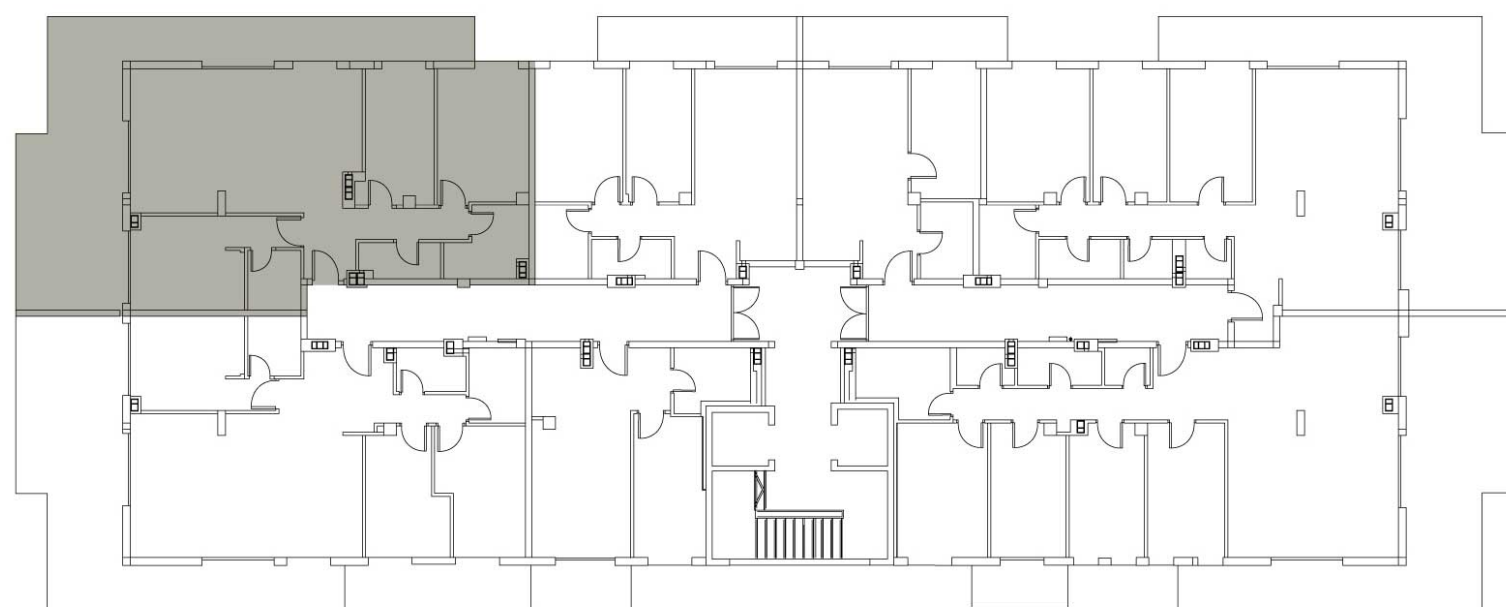
P (m<sup>2</sup>)

Orijentacija stana

1	Ulaz	5,26
2	Kuhinja	6,41
3	Dnevni boravak sa trepezarijom	24,42
4	Soba	12,82
5	Soba	9,20
6	Soba	12,72
7	Kupatilo	5,06
8	Wc	2,87
9	Kupatilo	3,22
10	Hodnik	4,20
11	Terasa	35,73
	<b>UKUPNO</b>	<b>121,91</b>



Osnova sprata



3D prikaz

